

**Wey River House, 22 High Street, Alton,  
Hampshire GU34 1BN**

## Luxury Apartments at Wey River House, 22 High Street, Alton, Hampshire GU34 1BN

Prices from £150,000

Situated in the heart of the vibrant market town of Alton, close to St Lawrence Church, one of Alton's historic landmarks which has connections with the English Civil War. Steeped also in Jane Austen history, the town has varied shops in the High Street and Georgian architecture, with the neighbourhood also including the library, the Curtis Museum, Allen Gallery, community centre, inns, primary and senior schools, and Alton College. The town centre also includes Sainsbury's, an M&S Simply Food store, weekly market and open air events and further churches of several denominations. There is a Waitrose store beside the station. On the periphery, you will find the Convent School, Alton Sports Centre and 2 golf courses.

**A choice of 14, one and two bedroom high specification luxury town centre apartments.**

1<sup>st</sup> Floor – Apartments 1 and 2 (2 beds)

2<sup>nd</sup> Floor – Apartments 3 (2 beds), 4, 5, 6, 7, 8, 9, 10 and 11 (all 1 bed)

3<sup>rd</sup> Floor – Apartments 12 and 13 (1bed) and 14 (2 beds)

Newly installed fitted floor coverings throughout.

High-end Howdens kitchens fitted with built in appliances.

Allocated parking space to Apartments 1,2,3,4,5,6,10,11,12 and 14.

2 x cycle sheds at rear of property.

Front and back entrances with key pad.



Fantastic first time purchase or investment opportunity.

Available to reserve off plan.

The apartments are due for completion end 2014/early 2015.

Each flat will benefit from a new 125 year lease.

Ground rent is estimated at £100 per annum

Service charges estimated at £500 per annum.

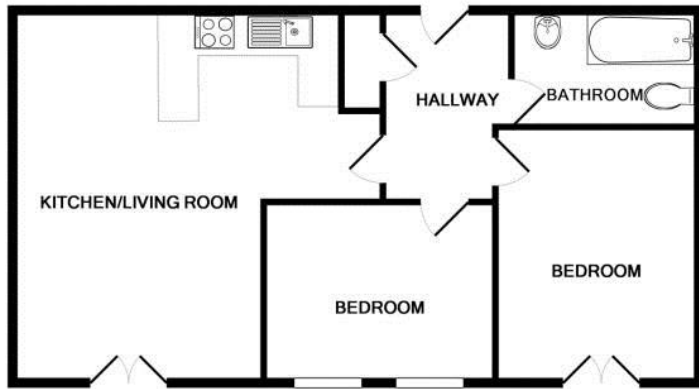
### Directions

On foot from our Alton office at 78 High Street, proceed left handed along the High Street passing Iceland on the right. Continue until reaching Sheila Betts florist, the High Street entrance to the building will be on the left hand side. Vehicular access is on Vicarage Hill.



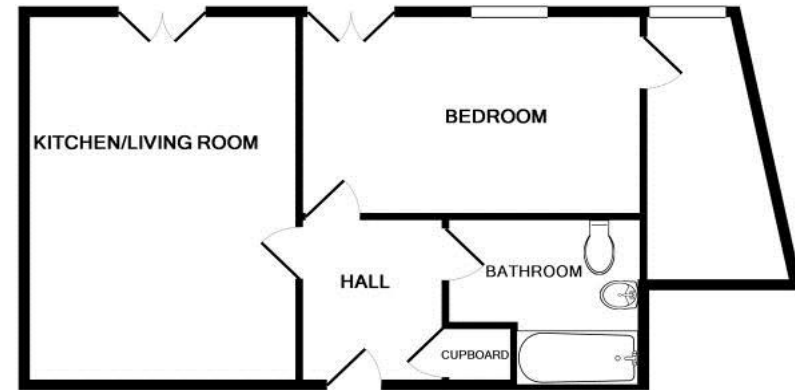
Viewing is by prior arrangement.  
78 High Street, Alton, Hampshire, GU34 1EN  
Sales: 01420 87379 Lettings: 01420 87409  
Email: [alton@wprhomes.co.uk](mailto:alton@wprhomes.co.uk)  
[www.wprhomes.co.uk](http://www.wprhomes.co.uk)

warren  
powell-richards



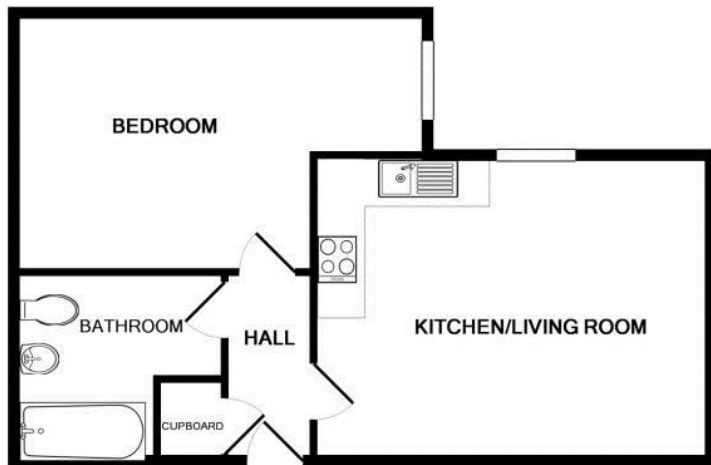
TOTAL APPROX. FLOOR AREA 635 SQ.FT. (59.0 SQ.M.)

Whilst every attempt has been made to ensure the accuracy of the floor plan contained here, measurements of doors, windows, rooms and any other items are approximate and no responsibility is taken for any error, omission, or mis-statement. This plan is for illustrative purposes only and should be used as such by any prospective purchaser. The services, systems and appliances shown have not been tested and no guarantee as to their operability or efficiency can be given  
 Made with Metropix ©2014



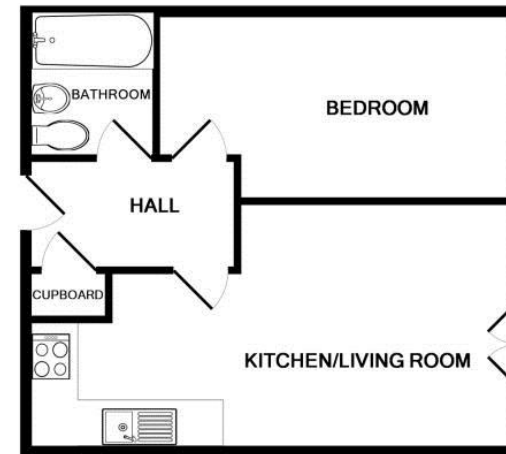
TOTAL APPROX. FLOOR AREA 495 SQ.FT. (46.0 SQ.M.)

Whilst every attempt has been made to ensure the accuracy of the floor plan contained here, measurements of doors, windows, rooms and any other items are approximate and no responsibility is taken for any error, omission, or mis-statement. This plan is for illustrative purposes only and should be used as such by any prospective purchaser. The services, systems and appliances shown have not been tested and no guarantee as to their operability or efficiency can be given  
 Made with Metropix ©2014



TOTAL APPROX. FLOOR AREA 495 SQ.FT. (46.0 SQ.M.)

Whilst every attempt has been made to ensure the accuracy of the floor plan contained here, measurements of doors, windows, rooms and any other items are approximate and no responsibility is taken for any error, omission, or mis-statement. This plan is for illustrative purposes only and should be used as such by any prospective purchaser. The services, systems and appliances shown have not been tested and no guarantee as to their operability or efficiency can be given  
 Made with Metropix ©2014



TOTAL APPROX. FLOOR AREA 420 SQ.FT. (39.0 SQ.M.)

Whilst every attempt has been made to ensure the accuracy of the floor plan contained here, measurements of doors, windows, rooms and any other items are approximate and no responsibility is taken for any error, omission, or mis-statement. This plan is for illustrative purposes only and should be used as such by any prospective purchaser. The services, systems and appliances shown have not been tested and no guarantee as to their operability or efficiency can be given  
 Made with Metropix ©2014